

# Aluminium System

# 10

## Click

sistema  
crimagliera

*rack system*





## CLICK SISTEMA CREMAGLIERA RACK SYSTEM



### Tipologia di utilizzo

*Use options*



### Profili cremagliera

*Rack profiles*



### Tipologia supporti

*Type of support*

Click, è un sistema modulare che utilizza un profilo a cremagliera ancorato a parete per il posizionamento di elementi come mensole, contenitori ed altri accessori.

I montanti hanno fori passo 32 mm studiati per ottenere altezze di utilizzo personalizzabili e utili per diverse tipologie espositive, garantendo universalità d'uso che lo rende ideale in molte situazioni. La cremagliera verticale Click da stabilità e rapidità di montaggio. Si può utilizzare in soluzioni con o senza pannelli schienali.

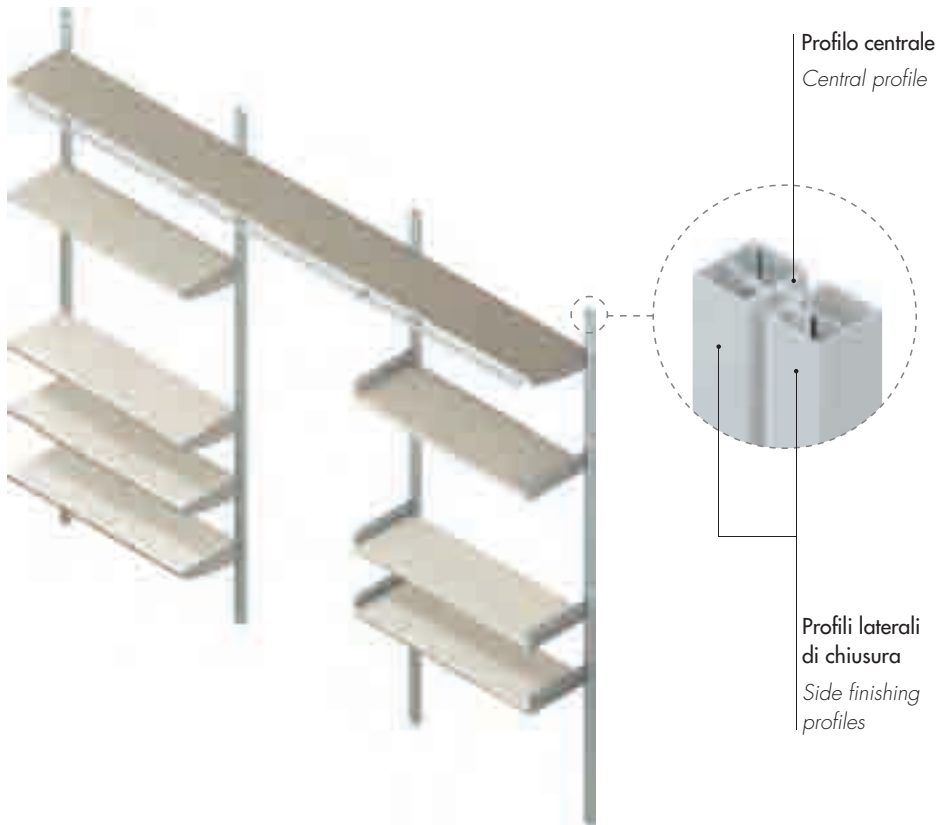
*Click is a modular system that consists in a rack-profile anchored to the wall to which shelves, storage units or other accessories can be attached.*

*The uprights have holes at intervals of 32 mm designed to offer customised heights that can be used for various types of display purposes making them universal and ideal for many situations. The Click vertical rack ensures stability and quick assembly. It can be used with or without back panels.*



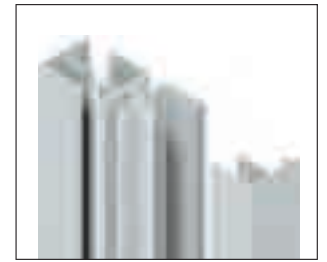
## TIPOLOGIA DI UTILIZZO *USE OPTIONS*

### SOLUZIONE SENZA PANNELLI SCHIENALI *VERSION WITHOUT BACK PANELS*

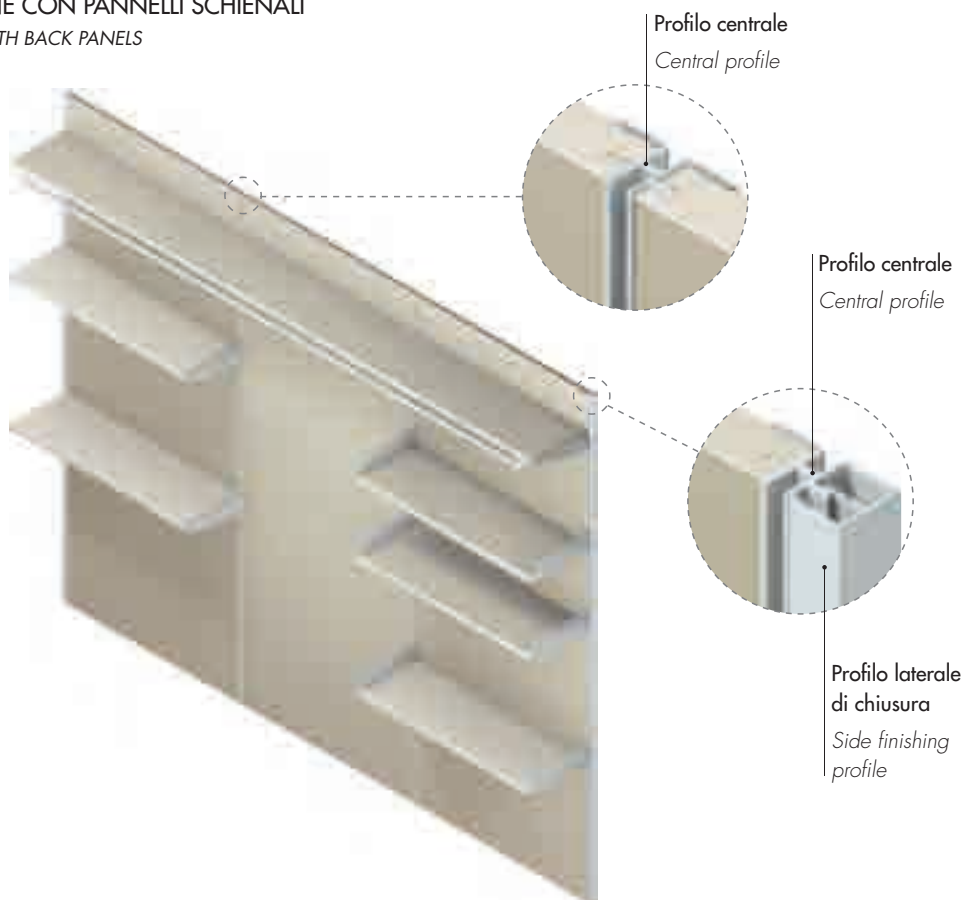


Il profilo centrale DA23 viene completato dai profili laterali DA25 che nascondono le viti di fissaggio.

*The central DA23 profile is completed by the DA25 side profiles that conceal the fixing screws.*



### SOLUZIONE CON PANNELLI SCHIENALI *VERSION WITH BACK PANELS*



Il profilo centrale DA23 permette l'unione degli schienali, completato con i profili DA25 diventa il montante laterale di finitura.

*The central DA23 profile joins the back panels and, when completed by the DA25 profiles, becomes the side finishing upright.*

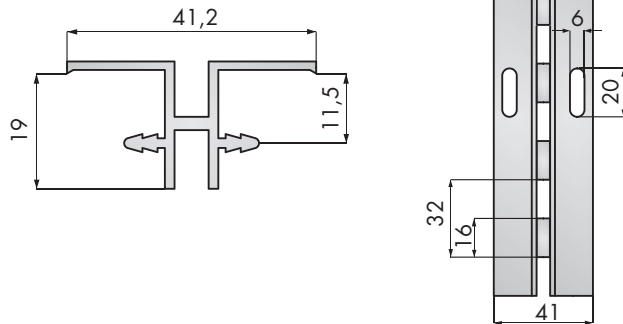


## PROFILI CREMAGLIERA RACK PROFILES

### PROFILO CENTRALE

CENTRAL PROFILE

**DA23**



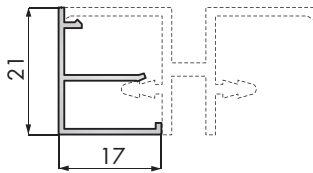
Profilo in alluminio estruso.  
Foratura passo 32 mm.  
Disponibile in varie finiture.

*Extruded aluminium profile.  
Holes at 32 mm intervals.  
Available in various surface  
finishes.*

### PROFILO LATERALE DI CHIUSURA

SIDE FINISHING PROFILE

**DA25**



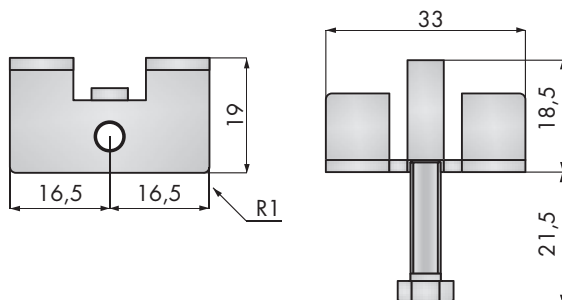
Profilo in alluminio estruso.  
Disponibile in varie finiture.

*Extruded aluminium profile.  
Available in various surface  
finishes.*

### PIEDINO DI REGOLAZIONE

ADJUSTING FOOT

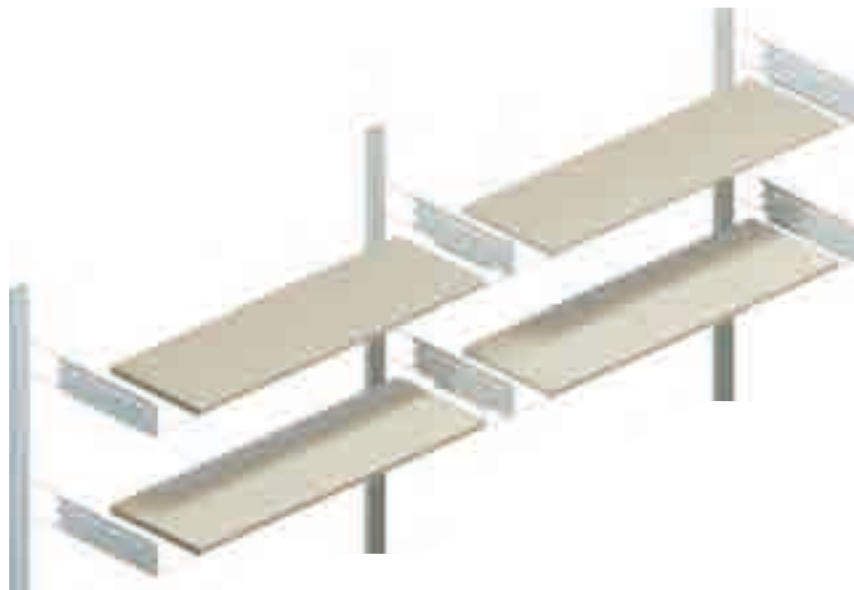
**CK001**



Elemento di regolazione completo  
di staffa in acciaio e piedino in  
materiale plastico con regolazione  
di 10 mm.

*Adjusting element with a steel  
bracket and plastic foot that has  
an adjusting allowance of 10 mm.*

## SUPPORTI MENSOLA A VASCHETTA SUPPORTS FOR SHELVES WITH RAISED SIDES



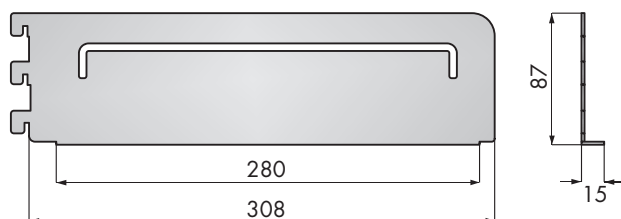
I supporti mensole a vaschetta permettono la realizzazione di mensole con fianchi laterali di contenimento. Supporti in acciaio verniciati.

*The supports for shelves with raised sides create shelves with sides that do not permit the contents to fall out. The supports are in painted steel.*

### SUPPORTO MENSOLA A VASCHETTA SX

LH SIDE SUPPORT FOR SHELF WITH RAISED SIDES

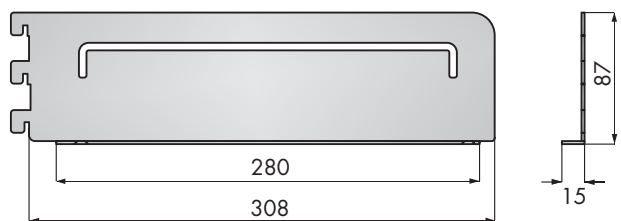
**CK002**



### SUPPORTO MENSOLA A VASCHETTA DX

RH SIDE SUPPORT FOR SHELF WITH RAISED SIDES

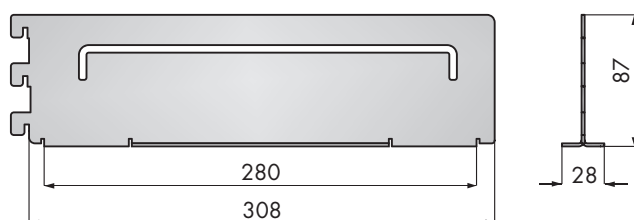
**CK003**



### SUPPORTO MENSOLA A VASCHETTA CENTRALE

CENTRAL SUPPORT FOR SHELF WITH RAISED SIDES

**CK004**



## SUPPORTI REGGIMENSOLA INFERIORI LOWER SHELF SUPPORTS



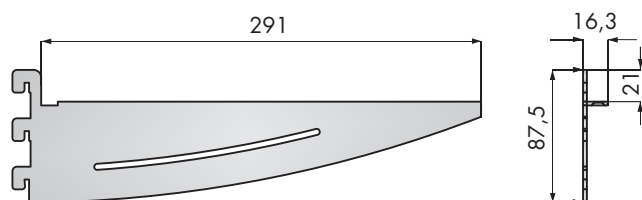
I supporti mensole inferiori permettono la realizzazione di mensole continue e senza alcun ingombro sulle parti di appoggio. Supporti in acciaio verniciati.

*The supports below the shelves make it possible to create continuous shelving without taking up space on the upper surface. The supports are in painted steel.*

### SUPPORTO MENSOLA INFERIORE SX

LH LOWER SHELF SUPPORT

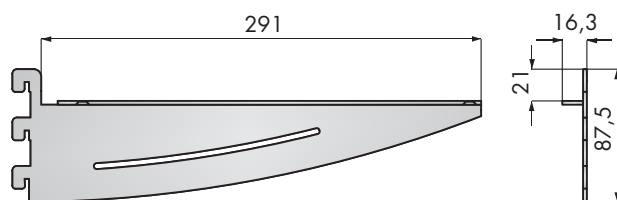
**CK005**



### SUPPORTO MENSOLA INFERIORE DX

RH LOWER SHELF SUPPORT

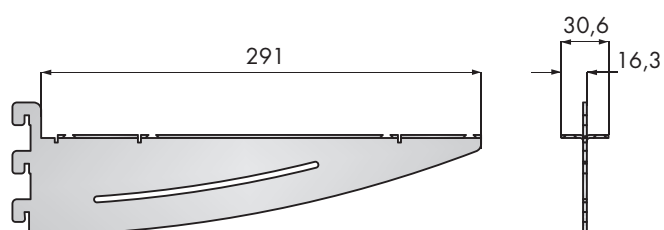
**CK006**



### SUPPORTO MENSOLA CENTRALE

CENTRAL SUPPORT FOR SHELF

**CK007**





## SUPPORTO MENSOLA/APPENDIABITI *SHELF/HANGING RAIL SUPPORT*

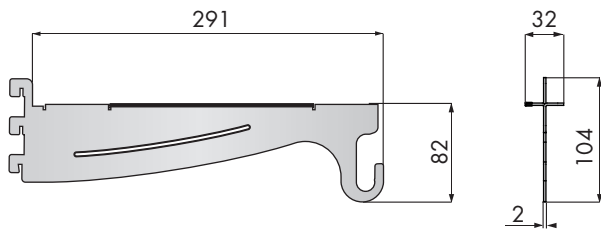


Questo tipo di supporto permette di sostenere contemporaneamente un ripiano e una barra appendiabiti.

*This type of support makes it possible to simultaneously fix a shelf and a hanging rail.*

### SUPPORTO MENSOLA APPENDIABITI *SHELF AND HANGING RAIL SUPPORT*

**CK012**

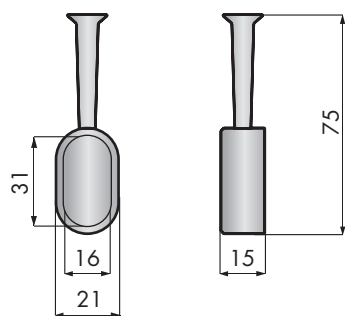


Staffa in acciaio verniciato per sostegno barra appendiabiti e mensola superiore.

*Painted steel bracket to support hanging rail and upper shelf.*

### REGGI BARRA APPENDIABITI *HANGING RAIL SUPPORT*

**CK014**



Supporto in zama verniciato per barra appendiabiti.

*Painted zamak hanging rail support.*

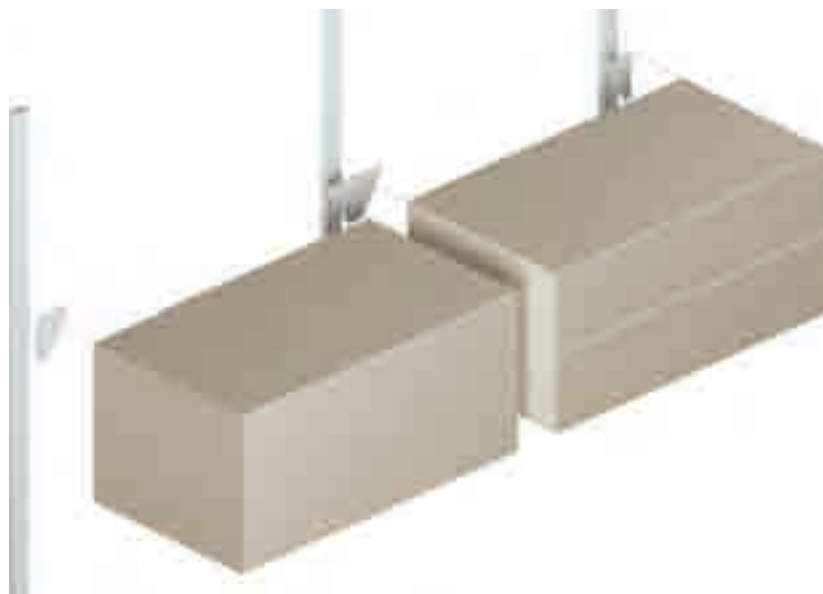
### BARRA APPENDIABITI *HANGING RAIL*

**HR001**



Profilo in alluminio estruso.

*Extruded aluminium profile.*



Questi appositi supporti permettono di agganciare alla cremagliera, contenitori di vario genere.

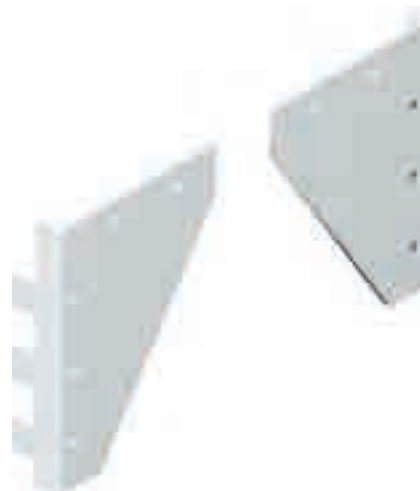
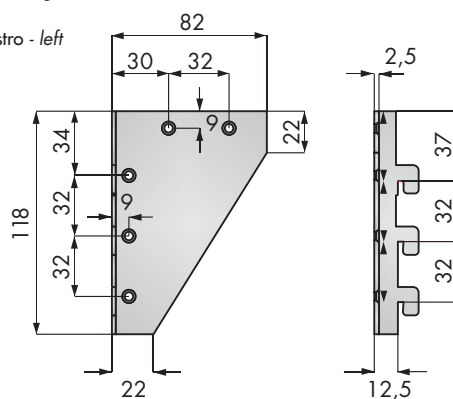
*These special supports make it possible to attach various types of storage units to the rack.*

## SUPPORTO PER CONTENITORE

STORAGE UNIT SUPPORT BRACKET

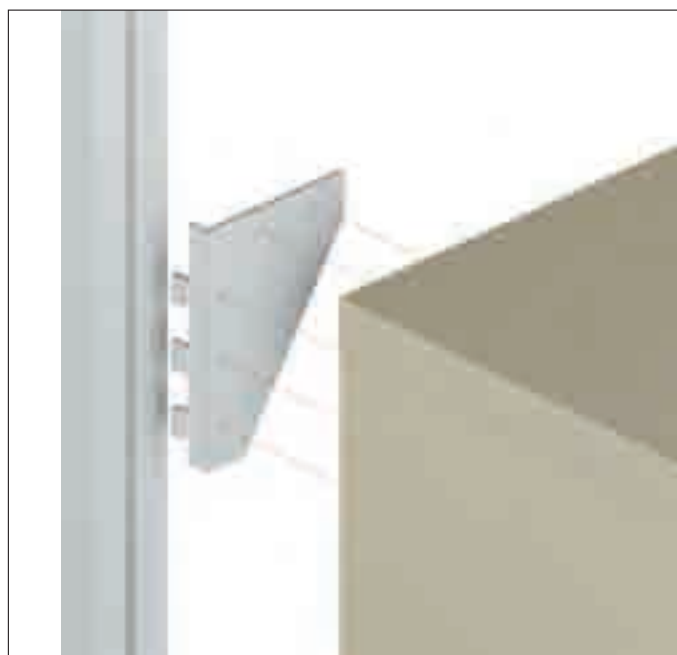
**CK011R** destro - right

**CK011L** sinistro - left



Staffe in acciaio verniciato.  
Disponibile in varie finiture.

*Painted steel brackets.  
Available in various surface finishing.*





[www.doal.it](http://www.doal.it)



Doal srl si riserva il diritto di apportare modifiche tecniche, senza alcun preavviso, se necessarie a migliorare la qualità del prodotto. Doal srl declina ogni responsabilità per eventuali inesattezze od errori di stampa contenuti nel catalogo. È vietata la riproduzione, anche parziale, del presente catalogo, in Italia ed all'estero.

*Doal srl is entitled to make technical changes without prior notice, if necessary to improve the quality of the products. Doal srl declines any responsibility for possible inaccuracies or typographical errors contained in this catalogue. Reproduction, even partial, of this catalogue in Italy or abroad is prohibited.*

*Il presente catalogo annulla e sostituisce la precedente edizione. Stampato: Ottobre 2010*

**DOAL srl**

31010 Moriago della Battaglia

(Treviso) Italia

P.I. IT 03724580265

REA TV 293154

Reg. Imp. TV 03724580265

Cap. soc. € 90.000,00 i.v.

Tel. +39 0438 890024

Fax +39 0438 890244

[www.doal.it](http://www.doal.it)

[info@doal.it](mailto:info@doal.it)

